



Morrish Road, Brixton, SW2

3 bedroom flat to let

£600 Per Week

Furnished

Property Details

A beautifully finished split level three double bedroom located just off Brixton Hill. Ideally located on a quiet residential street.

The open plan living space flows seamlessly, from the modern kitchen through to the comfortable dining area, the cosy living space is ideal for entertaining. The flat offers two bathrooms and extensive storage. All three bedrooms are fairly equal doubles and both bathrooms are finished not just to a high standard but also with appealing décor, in line with the rest of the property.

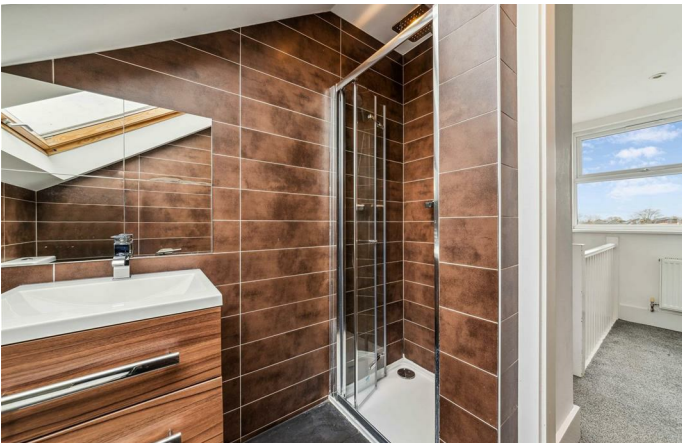
It is hard to come by this much space, tucked away within a secure contemporary building, completed with a spacious balcony. The property truly offers the best of everything, between the size, spec, outside space and location where purchasers can enjoy the convenience of the surrounding area whilst still maintaining a sense of calm in a residential location. The flat also has the added benefit of off-street parking in a gated garage offering extra security.

As far as locations go, it's fantastic. Morrish Road is a quiet and sleepy residential street, popular for its proximity to Brixton to the North, Streatham Hill to the South and Clapham/Balham to the West. Morrish Road is tucked just off Brixton Hill, perfectly located for anyone wanting to be close to the action, yet far enough away to retain a sense of calm. Within a five to ten minute walk is Brockwell

Features

- Three bedrooms
- Split level
- Two bathrooms
- Modern
- Brockwell Park
- Easy reach to Central Brixton

Council tax band C EPC rating C (71)



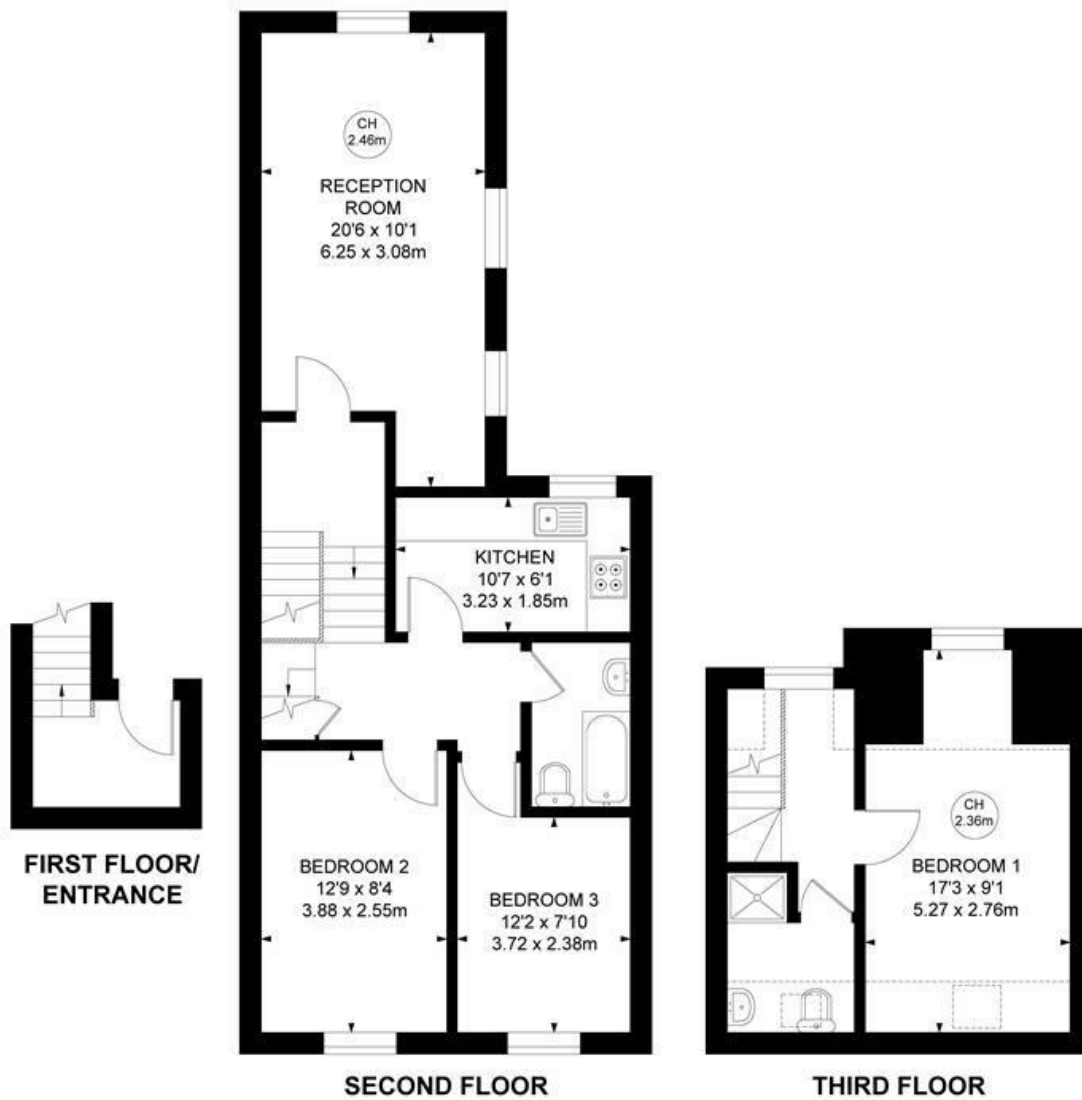
Morrish Road, Brixton, SW2

Morrish Road, SW2

3 Bedroom Flat

APPROXIMATE GROSS INTERNAL AREA :

891 SQ FT / 82.75 SQ M



While we try our very best, floor plans are produced as a guide only and we take no responsibility for the precise accuracy with which any property is represented.



Morrish Road, Brixton, SW2

